

Alpha Awning Series

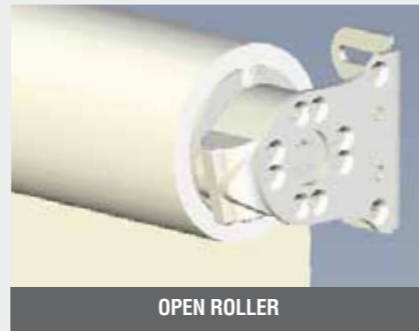
Australian designed and engineered, the Alpha Straight Drop Awning Series is able to accommodate window spans up to 16 SQM. This is perfect for large windows and doors where protection from environmental conditions is required to provide internal comfort.

The Alpha Awning Series features:

- All channels, headbox and rails made from extruded aluminium for corrosion resistance which can be powder coated to your choice of colour.
- An easy to operate design, in a choice of winch, crank, gear spring or motorised options.
- Flexible mounting options – ceiling fix, side fix or face fixings
- No light gaps with the Alpha STC or Alpha Channel Awnings.



UNIVERSAL HEADBOX

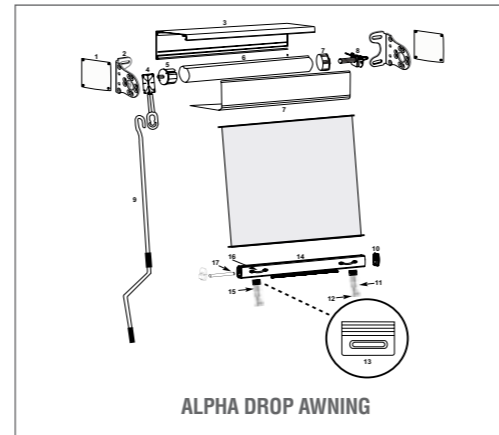


OPEN ROLLER



Alpha Drop Awnings

Alpha Drop Awnings are a straight drop awning fixed with hold down straps. The Alpha Drop Awning is the perfect choice when there are no posts or walls to mount to and the awning cannot use side channels or guides. The awning is strapped to the ground or railing to secure it from swinging in the wind.



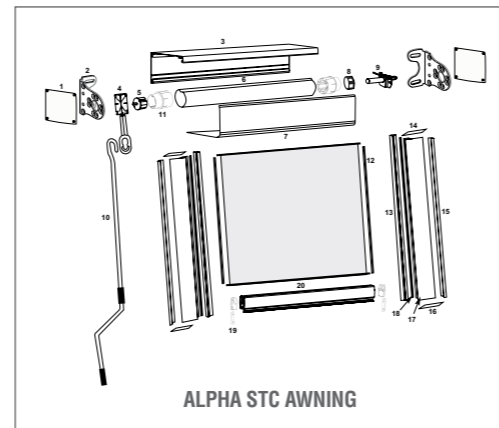
ALPHA DROP AWNING



Alpha STC Awnings

Alpha STC (Side Tension Channel) utilises a two piece side channel that ensures no light gaps as the fabric is held taut between the left and right channels. There are also no visible screws or rivets. It utilises specially designed tube reducers to minimise fabric build up, ensuring the fabric rolls up symmetrically for longevity.

The system features a unique floating channel allowing up to 10mm flexibility as well as sound bumpers to minimise noise when operating in windy conditions. It is the perfect solution for hotels, cafes and resorts. They are ideal for UV protection, insect resistance and are suitable for high wind areas. The STC Awning is perfect for tall buildings or large commercial projects.



ALPHA STC AWNING



Alpha Channel Awnings

The Alpha Channel Awnings are a suitable straight drop for complete blackout applications for schools, hospitals, theatres or west facing walls prone to high sun exposure. This option allows up to 30mm of fabric overlap within the channel, thereby eliminating light gaps and minimising the fabric from “blowing out” in windy conditions.

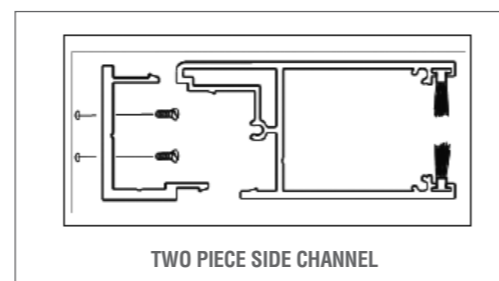
By utilising an L section back channel for fixing, there is no visible screws or rivets on the finished install. The deep channel top section simply snaps over the L section to provide a neat, clean finish.

The Channel Awning bottom rail end cap consists of two pieces designed to clamp on the fabric and carry it in the channel. By utilising the end cap for this function (as opposed to the bottom rail) the depth of the channel required is significantly reduced, making it substantially smaller than most channel systems.

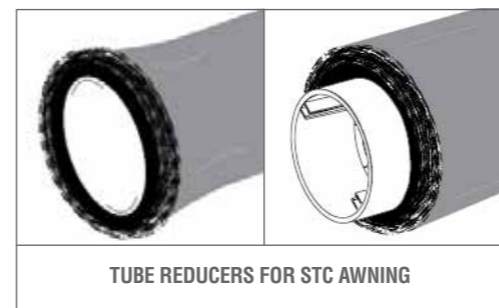
Options

The locking pin option allows consumers to secure the bottom rail at various heights, by simply sliding the bolt into selected hole positions in the side channel. This feature holds the fabric taught and minimises bottom rail movement. This feature is essential for spring operated channel systems.

Brush – The side channels incorporate a brush insert down the length to assist in retaining fabric within the channel, whilst also minimising noise from bottom rail movement.



TWO PIECE SIDE CHANNEL



TUBE REDUCERS FOR STC AWNING



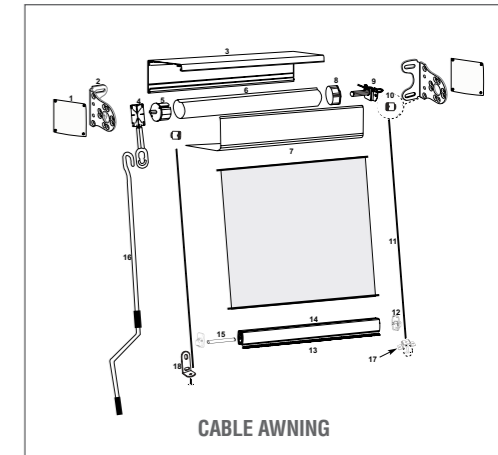
Alpha Cable Awnings

The stainless steel cable guide system is a great contemporary straight drop option for sun/UV protection, air flow and where channels are not suitable. The cables are constructed from high tensile 316 grade marine stainless steel, making them perfect for coastal applications.

Bottom Rail end caps – The cable system bottom rail end caps allow the bottom rail to reach the ground when using the floor mount option. When combined with the bottom rail brush option, this will assist in eliminating light gaps from under the bottom rail when fully lowered.

Options

Cable Mounting Options – Fabricated from modern, polished stainless steel, you have the choice of either floor or wall mount brackets. A 2.5mm thickness ensures the brackets not only look great, but provide long term durability.



CABLE AWNING



Alpha Pivot Awnings

Pivot Awnings project the fabric off the window, with the arms and fabric forming an arc that allows air to flow behind the awning. This allows windows to be open whilst the awning is projected and allows for airflow and ventilation thus reducing the amount of embodied energy required to cool the room.

Options

Headbox - For the Pivot Arm System, the headbox has an open end to accommodate a variety of fabric angles.

Heavy Duty Pivot Arm – The heavy duty spring incorporated in the pivot arms provides excellent fabric tension even with awning widths up to 5 metres. The arms are finished in a modern anodised finish that complements our standard Silver Pearl hardware.

Sliding Arm Set – An optional sliding arm set allows you to change the pivot point of the awning by simply moving the arms up or down the sliding rails. This increases the functionality of the awning from a window shade to a close to the wall shade cover.

Part One - General

Scope

SUPPLIER: Finish and install Hunter Douglas Commercial Alpha STC Awning; Alpha Channel Awning; Alpha Drop Awning; Alpha Cable Awning or Alpha Pivot Awning. (Premium Quality)

Submittals

PRODUCT DATA: Manufacturer’s descriptive literature shall be submitted indicating materials, finishes, construction and installation instructions and verifying that the product meets requirements specified.

Delivery, Storage and Handling

Product shall be delivered to site in manufacturer’s original packaging. Product shall be handled and stored to prevent damage to materials, finishes and operating mechanisms.

Job Conditions

Prior to shade installation, the building shall be enclosed. Relative humidity shall not exceed 80%. Wet work shall be complete and dry.

Part Two - Product

Hunter Douglas Commercial Alpha Awning Series

Acceptable Manufacturer:

Hunter Douglas Commercial

338 Victoria Road, Rydalmere NSW 2116

Telephone: 1300 733 078

Website: www.hunterdouglascommercial.com.au

Fabric

The material used to provide the Alpha Awnings Series skin shall be Hunter Douglas Commercial Everview External Screen Fabric, Orchestra Fabric, Canvas Fabric or clear PVC Fabric.

Hardware

The operating hardware shall be the Hunter Douglas Alpha STC Awning; Alpha Channel Awning; Alpha Drop Awning; Alpha Cable Awning or Alpha Pivot Awning. The guiding shall be stainless steel cable. Hardware is available in custom powder coating.

Operating Method

Operating options include internal cord winch, spring for widths up to 3.5 metres in the 60 mm tube and a manual crank system also for widths less than 3.5 metres, available in black, grey and white for easy colour co-ordination. A range of motorised options are also available from remote to wall mounted switch controls. Integration into automation or building management systems is also available.

Components

Headbox

The hardware is Silver Pearl or can be powder coated options.

Dimensions

	CRANK GEAR	MOTORISED	INTERNAL CORD	SPRING
OVERALL MAX WIDTH	5000mm	5000mm	3500mm	3500mm
OVERALL MIN WIDTH	500mm	800mm	500mm	800mm
OVERALL MAX DROP	4000mm	4000mm	2900mm	2900mm
OVERALL MIN DROP	300mm	300mm	300mm	300mm
MAX AREA	16 Sqm	16 Sqm	10 Sqm	10 Sqm

Solar Optical Properties

Everview External Screen Fabric	Ts	Rs	As	Tl	Rl	Al	Tuv	Sc
Ocean	10	5	85	15	6	5	5	5
Ninja	9	3	88	15	4	3	3	3
Shale	14	46	40	17	49	46	46	46
Schist	9	4	87	15	6	48	48	48
Platinum	15	10	75	21	11	10	10	10
Steel	11	23	66	16	24	23	23	23
Graphite	15	38	47	20	40	38	38	38
Ice	30	60	10	32	61	60	60	60

Solar Optical Properties Guide
 Ts - Heat Transmittance (%) Rs - Heat Reflectance (%) As - Heat Absorbance (%)
 Tl - Light Transmittance (%) Rl - Light Reflectance (%) Al - Light Absorbance (%)
 Tuv - Ultraviolet Transmittance (%) Sc - Shading Coefficient

TECHNICAL SPECIFICATIONS

ALPHA AWNING SERIES

5 year warranty*

features and benefits

- Five different guiding options to suit any commercial project
- Australian made design
- Capable of spanning up to 16 SQM with the heavy duty stainless steel 78mm roller tube
- Headbox and open roller options
- Multi functional Bottom Rail
- Colour Co-ordination with multiple fabric options
- Huge range of colourways designed to suit most Australian exteriors
- Fabric options include Everview External Screen Fabric, Dickson Orchestra Fabric, Canvas Fabric and Clear PVC fabric. All fabrics are designed to resist fading
- Stainless steel cable guides using Marine grade (316) Stainless Steel.
- Manual crank control, internal winch operation, spring operation or motorised control options that can integrate with building management systems



Applications

- Alpha STC Awning (Side Tension Channel);
- Alpha Channel Awning;
- Alpha Drop Awning
- Alpha Cable Awning; and
- Alpha Pivot Awning.

Colour Range

Everview Screen Fabric comprises a colour palette of 24 colours incorporating metallic, natural and clear yarns to perfectly coordinate with any commercial shading project. With a 10% openness factor, it is perfect for inclusion in Green Star rated projects. This stable 2 x 2 weave fabric provides significant heat and glare protection and is available in 2.34 metre widths, perfect for commercial applications. It allows the awning systems to be manufactured up to 5 metres wide with a 2.9 metre drop with no unsightly fabric joins.

Dickson Orchestra Fabric - Incorporates up to 80 colours with a combination of solid and striped fabrics providing semi block out which is great for sun, glare and heat control. 1.2 metre panel widths are standard, with selected colours available in 2 metre wide panels to minimise the visual effect of joins.

Clear PVC Fabric – A quality clear .75mm PVC fabric is an option for all Alpha crank, winched or motorised Drop Awnings. This fabric provides enclosures with improved protection from wind and wet weather whilst also allowing great view through.

Durability

Colour fastness of Everview External Screen Fabric: 6-7 Blue Scale (where the maximum score is 7) (AS 2001.4.21)

Energy Benefits

Preventing heat from entering a building through the window can make a significant difference to cooling costs over the life of

any commercial building. The Alpha Awning Series can reduce internal temperatures compared with an unshaded window. Alpha Awning Series can be automated using sun and wind sensors, or connected to building management systems to optimise energy savings. In fact, careful selection of shading integrated in building design can greatly reduce the need for air-conditioning. Most Green Star Rated Buildings require automation of internal or external window coverings for compliance.

Quality

Hunter Douglas Limited, the supplier of Hunter Douglas Commercial components, is a quality endorsed company, certified as complying with the requirements of AS/NZS ISO 9001:2008.

Australian Made

The quality of the Alpha Awning Series is testament to the Hunter Douglas design team, with all Alpha Drop Awnings manufactured to rigorous quality standard in Australia. This allows for premium quality and reduced lead times.

Hardware Specification Overview

Marine Grade 316 Exposed aluminium and coated to AS3715 (powder coated parts) to type 3 (mild to moderate, tropical and industrial, exterior) for corrosion protection. All plastic components are UV stabilised.

Headbox

The optional headbox encloses the fabric from external elements such as rain, UV rays and debris which assists in keeping the fabric clean and enhances longevity for your clients. Utilising a common headbox you can select a number of guiding systems to suit various applications. Each Alpha Awning is also available with an exposed roller / fabric option.

Alpha Cable Awning



To see how Hunter Douglas Commercial Window Coverings can transform your next project call **1300 733 078**.

www.hunterdouglascommercial.com.au

HunterDouglasCommercial

WINDOW COVERINGS

HunterDouglasCommercial

WINDOW COVERINGS

To see how Hunter Douglas Commercial Window Coverings can transform your next project call **1300 733 078**.

*Please refer to the Hunter Douglas Commercial website for details.

www.hunterdouglascommercial.com.au

© Copyright 2011. © Registered Trade Marks of Hunter Douglas Limited (ABN 98 009 675 709).