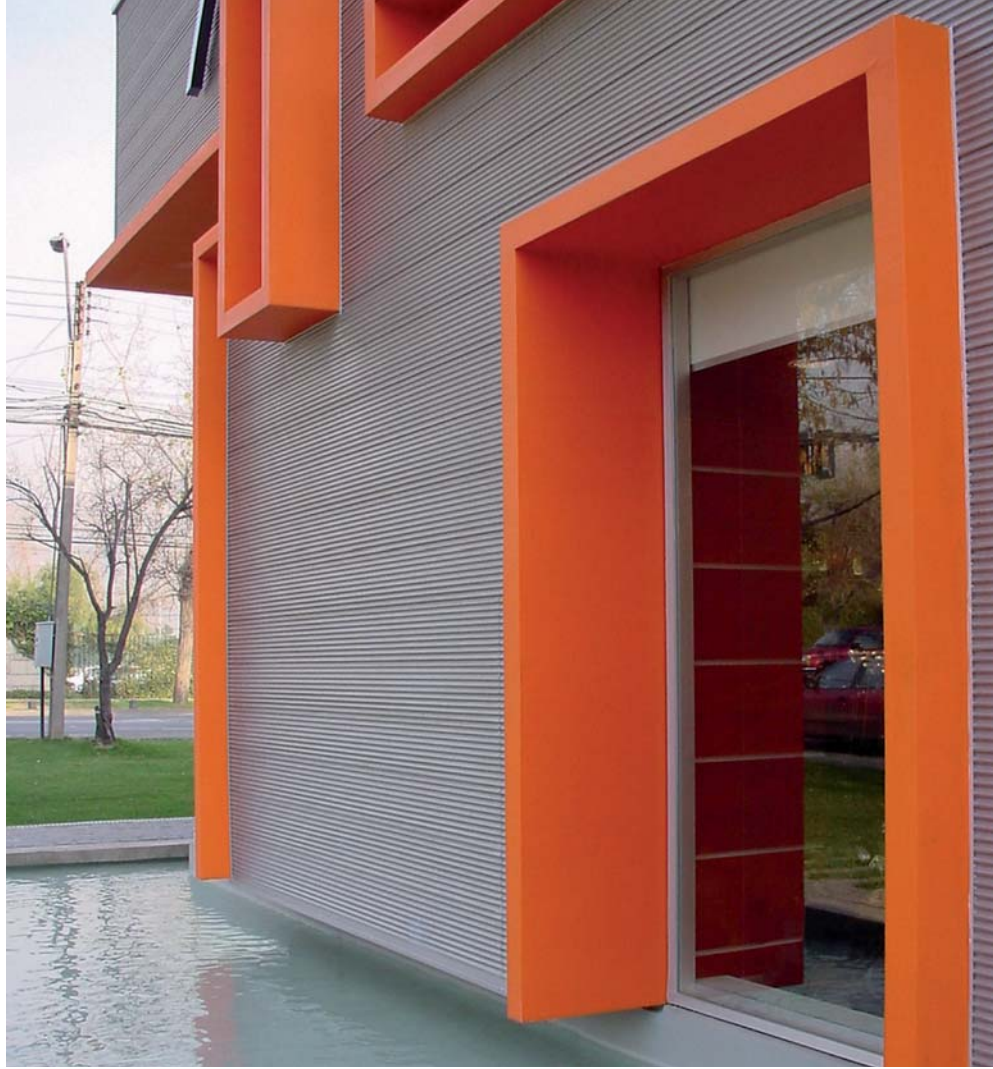


## SOFTWAVE FACADE SYSTEMS

Softwave Facade Systems have been designed to be used as exterior and interior cladding, sunscreens or ceilings, providing a multitude of design possibilities. Its forms are expressed as perforated curved line panels which vary according to three model types: Softwave 10, 25 and 50. These can be installed with their wave-like forms in either a horizontal or vertical orientation.



### APPLICATIONS

- Exterior and interior cladding
- Sunscreens
- Ceilings
- View-breakers

### MATERIAL

Aluminium: 0.8mm thickness

### LENGTH

Maximum length is 5.5m

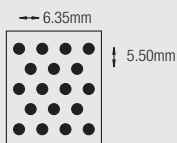
### COLOUR RANGE

HD COLOR-COTE® Natural Satin.

Other colours are available upon request.

### PERFORATION PATTERN

#103 – diameter 3mm - 20% open area  
Other perforation patterns upon request.



### PRODUCT RANGE

	Weight	Coverage
Softwave 10	2.00kg/m <sup>2</sup>	Cover 270mm (+/-5) with a yield of 3.7 lineal metres per m <sup>2</sup>
Softwave 25	2.55kg/m <sup>2</sup>	Cover 280mm (+/-5) with a yield of 3.6 lineal metres per m <sup>2</sup>
Softwave 50	2.41kg/m <sup>2</sup>	Cover 430mm (+/-5) with a yield of 2.33 lineal metres per m <sup>2</sup>

### ENERGY BENEFITS

Softwave used in a sun control application can be an effective way to reduce heat transmittance, regulate light and noise, and maintain airflow, views and privacy.

### ENVIRONMENTAL BENEFITS

Softwave can be selected to give building occupants the optimum combination of light and heat control, privacy and view to the outside.

Softwave is made of aluminium, which is a recyclable material. It is durable, combining high strength with corrosion resistance ensuring a long lifespan and maximising sustainability.

### QUALITY

Hunter Douglas Limited is a quality endorsed company, certified as complying with the requirements of AS/NZS ISO 9001.2000.

### FINISH

The exclusive HD COLOR-COTE® polymer finish applied to Softwave resists ageing and maintains its original colour over time. HD COLOR-COTE® incorporates a high molecular weight polymer that gives effective resistance against ultra-violet light, heat, humidity and oxygen. A fine, smooth finish inhibits dirt retention and with about 25 gloss level, is virtually self-cleaning through the action of rain.

# SOFTWAVE 10

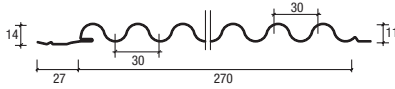
# SOFTWAVE 25

# SOFTWAVE 50



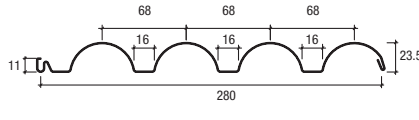
## INSTALLATION

Maximum distance between supports 1200mm



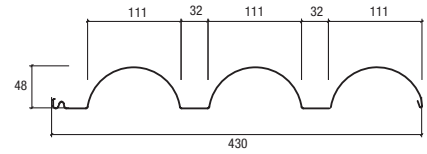
## INSTALLATION

Maximum distance between supports 1200mm

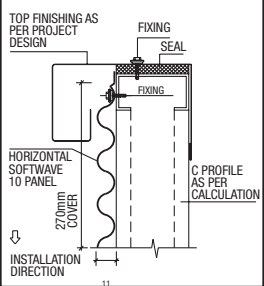


## INSTALLATION

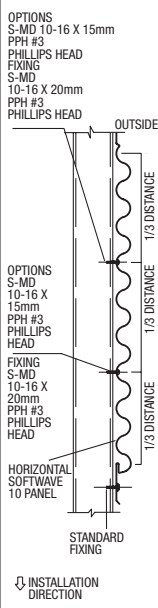
Maximum distance between supports 1800mm



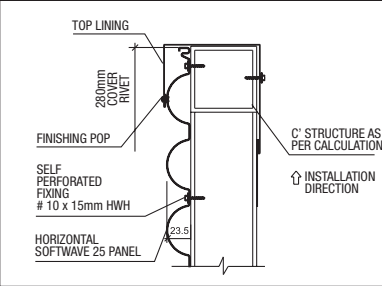
### TOP FINISHING DETAIL



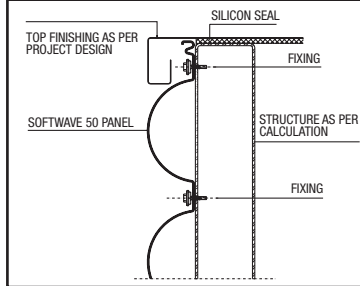
### FIXING POSITION



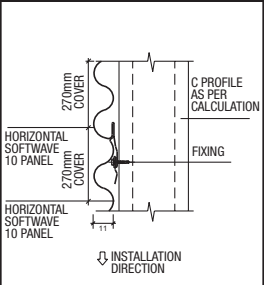
### TOP FINISHING DETAIL



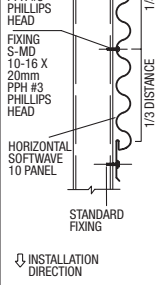
### TOP FINISHING DETAIL



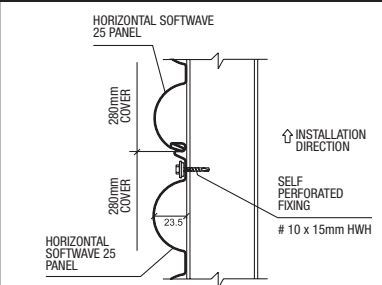
### PANEL JOINT DETAIL



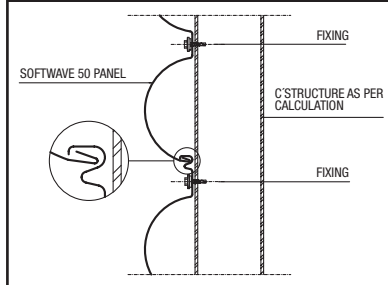
### PANEL JOINT DETAIL



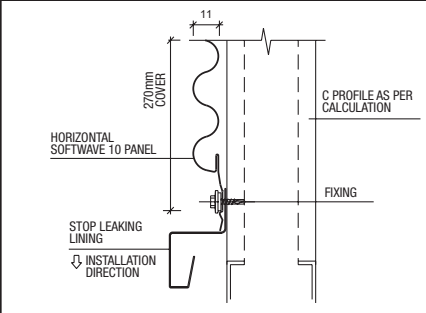
### PANEL JOINT DETAIL



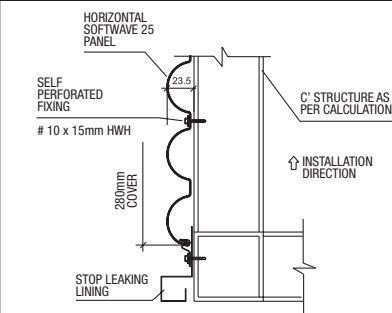
### PANEL JOINT DETAIL



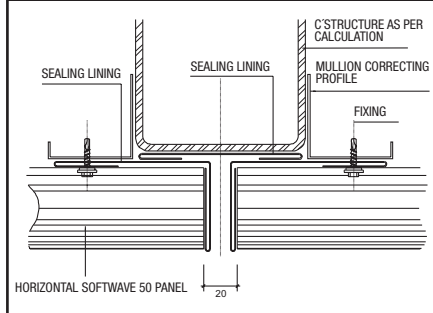
### BOTTOM FINISHING DETAIL



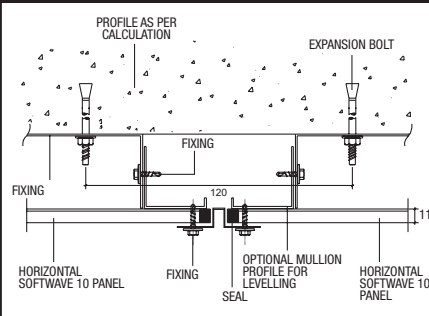
### BOTTOM FINISHING DETAIL



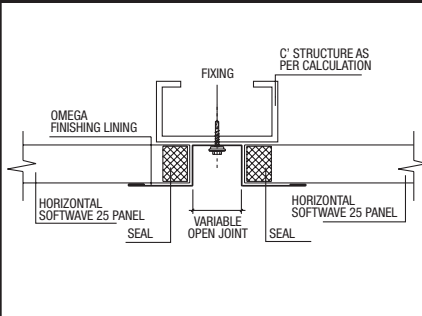
### VERTICAL OPEN JOINT DETAIL



### OPEN JOINT DETAIL



### HORIZONTAL PANEL JOINT DETAIL



## SHORT FORM SPECIFICATION

.....m<sup>2</sup> Softwave Facade/Screen Type (10/25/50).....  
 consisting of panels made of aluminium, 0.8mm thick, (cover 270mm/cover 280mm/cover 430mm). Perforation #103 (20% open area). Standard colour is HD COLOR COTE® Natural Satin finish or other approved colour .....

Panel is fixed with approved mechanical fasteners.

Supply and fix according to the fixing instructions of Hunter Douglas Commercial, a division of Hunter Douglas Limited.

Technical data is subject to change without notice.